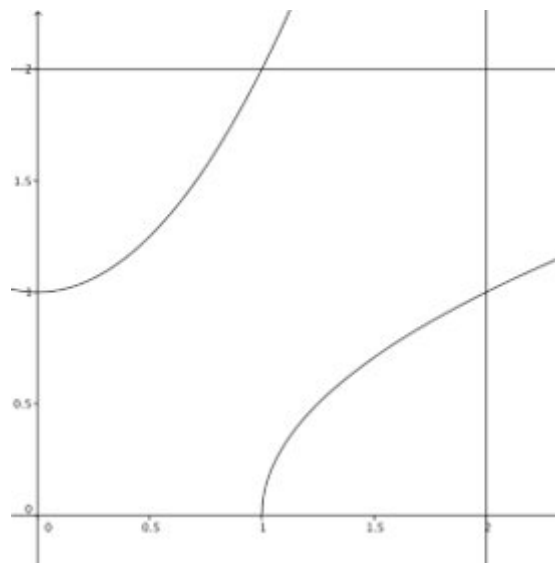


ProTEEM Day 2 Part II: Task – Problem Solving

Exercise 2

In the figure below you see the graphs of $f(x) = x^2 + 1$ and $g(x) = \sqrt{x-1}$ and the lines $x = 2$ and $y = 2$. Three areas can be distinguished: I, II and III.



Determine the area of each of the three areas I, II and III in (at least) two different ways.
Be creative!